

# Quick Start Guide for SharkNet™ V 3.017

Metal Shark Management Software



RS232 Setup (for RS485 see the rs485 quick start guide)

*\*Note: RS232 is only recommended for short, single cable runs to one detector, or TEMPORARY connection with a laptop computer (If your laptop has an RS232 serial port). RS232 cannot be used for networking two or more detectors. Tectronix Systems Inc. recommends RS485 in most cases, as it is less susceptible to noise than RS232.*

## 1. Install SharkNET™ Software.

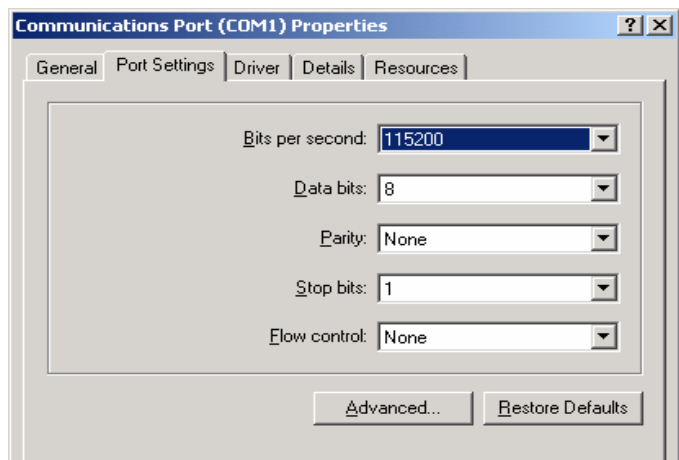
- a) Insert SharkNET™ software CD into your PC's CDROM drive.
- b) If the software does not start automatically, go to "My Computer", click on the CDROM icon, and double-click the file "setup.exe".
- c) Follow the prompts in the setup wizard. Install the SharkNET™ program to C:\Program Files. This should be the automatic install setting.
- d) Now that the software is installed we will make the SharkNET™ program settings AFTER connecting the Metal Shark detector to your Computer.



**Fig 1c**

## 2. Determine the com port settings for your PC's RS232 serial port (the 9-pin connector on the back of your computer)

- a) To get to the window shown right (fig 2a)→ Follow this path: Start\Control Panel\System\Hardware\Device Manager\Ports\ Communications Port Com 1 (Com# will be unique to your computer. Write down the Com# for later use)
- b) Make your settings match what you see in figure 2a shown to the right.



**Fig 2a**

## 3. Make the necessary settings in the Report Menu on the Metal Shark control box.

- a) Press the "up" key on the control pad and press "ok" on "open menu".
- b) Press the "up" key until you get to "Report Menu", then press "ok" to enter the menu.
- c) Make the settings as shown below ↓



**Fig 3a**

Parameter	Setting
PRINT	SHARKNET
INTERFACE	RS232
BAUD	115200
SHARKNET/INSTRUMENT	1

See reverse for further instructions...

4. After running communications cable (see SharkNET™ manual for cable specifications), you need to make the necessary connections at the metal detector and then at the host computer running SharkNET™.

a.) Connections at the detector

\*Red wire – port 21 on Shark mainboard

\*Black wire – port 22 on Shark mainboard

\*Green wire – port 23 on Shark mainboard

\*\*This is the color code of the cable if purchased from Tectronix.

\*\*\*If you did not purchase RS232 communications cable from Tectronix, below is the pinout needed to make the cable:

DB9 Female connector	Shark Mainboard
Pin 3 →	Port 21
Pin 2 →	Port 22
Pin 5 →	Port 23

b.) Connect the DB9 connector to the RS232 serial port on the back of your computer.

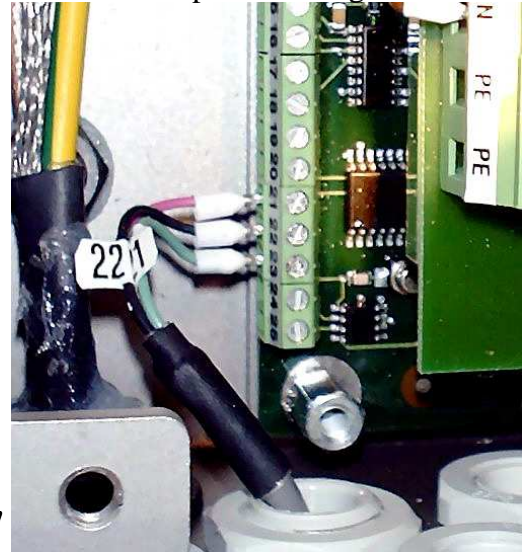


Fig 4a

5. Now you are ready to start SharkNET™ and make the appropriate settings.

a) Double click the SharkNET™ icon on your desktop.

b) On the menu bar at the top of the program window, click “options” and then go to “SharkNET™ settings”

c) Make your settings as shown to the right. Your Com Port number will be unique to your Computer and you will find this number by Following step 2 on the previous page

d) After changing the number of units you will be asked to re-start SharkNET™. Restart the program and your system should now be communicating with the SharkNET™ software.

e) Refer to the full SharkNET™ manual for detailed instructions on using the software and for troubleshooting.

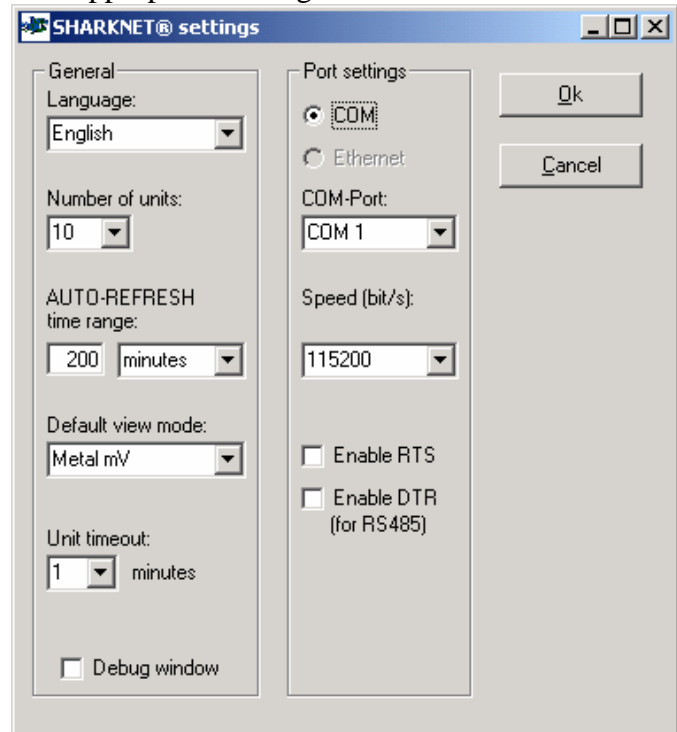


Fig 5b